

## PORTABLE BANKED TRACKS

VERSATILITY AND PERFORMANCE



**THE WORLD'S FIRST PORTABLE BANKED MODULTRACK WAS INSTALLED IN 1984 AT THE WORLD MEMORIAL HALL IN KOBE, JAPAN. ALL OF MONDO'S MODULTRACK SOLUTIONS ARE DESIGNED WITH FULLY ADJUSTABLE STRUCTURES TO GUARANTEE QUICK ASSEMBLY AND COMPLIANCE WITH INTERNATIONAL REGULATIONS, EVEN WHEN THE SUPPORTING SURFACE IS NOT STATE-OF-THE-ART.**

### EASY INSTALLATION FOR MAXIMAL PERFORMANCE

With its claw-locking mechanism, the structure's frame can be assembled and disassembled quickly and easily with no screws or bolts, guaranteeing consistent tightness and perfect dimensional accuracy, installation after installation. The process can be completed in a few short days. Once disassembled, the track is easily stored in a warehouse and the entire area can be used for other purposes.

## MONDOTRACK WS 13.5 MM I / VERSION

### I / VERSION

#### THICKNESS

13,5 mm

#### WEIGHT

12,6 kg/m<sup>2</sup>

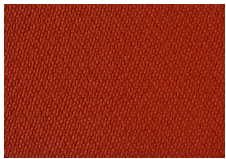
#### LENGTH

6÷15 m

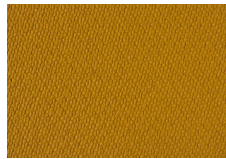
#### WIDTH

122÷160 cm

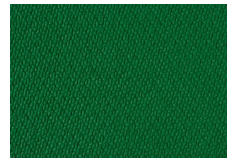
### COLOR RANGE



P30



P58



P10



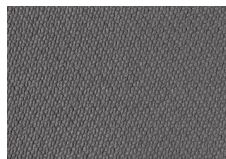
P14



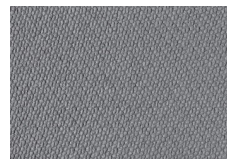
P18



P85



P06



P31

## SPORTFLEX SUPER X 720 K39 13.5 MM I / VERSION

### I / VERSION THICKNESS

13,5 mm

### WEIGHT

12.0 kg/m<sup>2</sup>

### LENGTH

6÷15 m

### WIDTH

122÷160 cm

## COLOR RANGE

### INDOOR&OUTDOOR



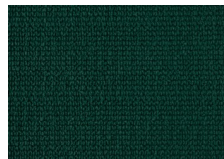
P30



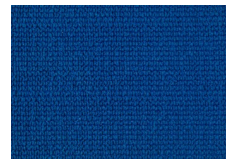
P58



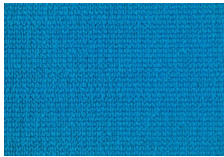
P10



P14



P18



P85



P06



P31